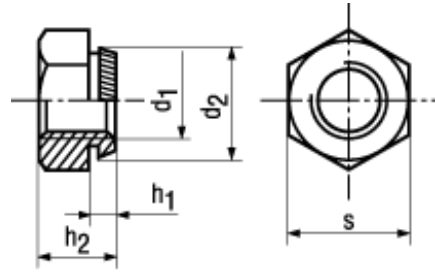




550 HV



**BN 201**

**Hex self clinching nuts**

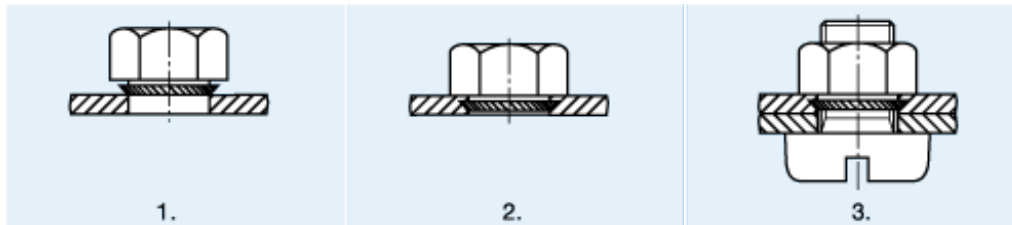
Steel case-hardened 550 HV

zinc plated blue



ISO 4042

Fasteners hardness  $\geq 320$  HV with electroplated coatings:  
Susceptible to hydrogen embrittlement!  
Further notice to residual risks can be found in the introduction section.



1. Centering the nut over the drilled or punched bore.
2. Press in the nut by using either a hammer or a rotating punch.
3. Fasten the screw from the opposite side.

Article#	d <sub>1</sub>	d <sub>2</sub>	s	Bore Ø H11	Distance to center	h <sub>2</sub>	Sheet thickness min.	h <sub>1</sub>
1098438	M2	4,7	5,5	4,5	4,8	3	1	0,9
1098454	M2,5	4,7	5,5	4,5	4,8	3	1	0,9
1098470	M3	4,7	5,5	4,5	5,6	3	1	0,9
1001000							2	1,8
1098489	M4	5,7	7	5,5	6,7	3,2	1	0,9
1001345						4,5	2	1,8
1098497	M5	6,75	8	6,5	7	4	1	0,9
1001698						5	2	1,8
1098500	M6	8,25	10	8	8,7	5	1	0,9
1002236							2	1,8
1098519	M8	10,35	13	10	9,5	6,5	2	1,8
1098527	M10	12,85	15	12,5	10	8	2	1,8
1098535	M12	14,85	17	14,5	12	10	3	2,8
1098543	M16	18,85	22	18,5	16	13	3	2,4
1098551	M20	23,4	27	23	20	16	4	3,9