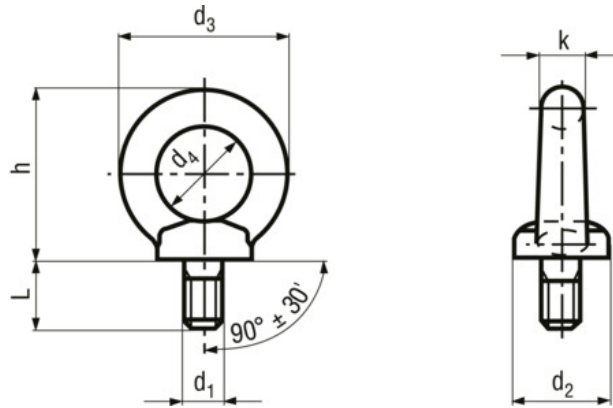


Lifting eye bolts

BN 258



Standard	DIN 580, ~ISO 3266, ~UNI 2947, ~ČSN 021369
Additional information	Supply possibilities for fine threads and other types of threads on request
Thread	fully threaded
Material	Steel
Material type	C15E
Surface	zinc plated blue

Notes on use



Functional principle

To ensure safety, do not exceed the load capacities specified in the table when using a single eye bolt or two eye bolts at horizontal angle greater than 45 degrees.

The working load limits specified in the chart require that:

- the lifting eye bolt is completely screwed in
- blind holes are drilled so deeply that the lifting eye bolt can be tightened to the bearing surface
- the threaded stud hole depth is sufficient so that the lifting eye bolt can be tightened to the contact surface
- the thread depth is sufficient
- the lifting eye bolt has to bear the induced forces without deformation

Recommendations: Before placing the lifting eye bolt into use, ensure correct seating and check for damage (eng. corrosion, cracking, beat traces, deformation).

Eye bolts with obvious damage should not be used.

Assembly notice

Working loads limits in kg max.

A: axial per eye bolt

B: per eye bolt ≤ 45°

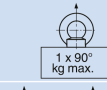
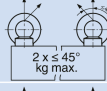
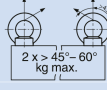
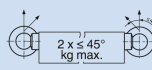
C: each eye bolt > 45° to 60° or the side of each eyebolt ≤ 45°

Lifting eye bolts must always be tightened to the contact surface. Transverse loads are not allowed. To ensure the correct position, suitable washers must be used.

When the counterpart is a nut, it should be equipped with a washer (0,8xd).

When used as temporary attachments on larger objects, the next larger thread size should be used.

Illustration assembly

	M6	M8	M10	M12	M14	M16	M18	M20	M22	M24	M27
A 	75	140	230	340	490	700	850	1200	1400	1800	2100
	M30	M33	M36	M39	M42	M45	M48	M52	M56	M64	M72x6
	3200	3200	4600	4600	6300	6300	8600	8600	11500	16000	20000
B 	M6	M8	M10	M12	M14	M16	M18	M20	M22	M24	M27
	M30	M33	M36	M39	M42	M45	M48	M52	M56	M64	M72x6
	55	100	170	240	350	500	600	860	1000	1290	1500
	2300	2300	3300	3300	4500	4500	6100	6100	8200	11000	14000
C 	M6	M8	M10	M12	M14	M16	M18	M20	M22	M24	M27
	M30	M33	M36	M39	M42	M45	M48	M52	M56	M64	M72x6
	38	70	115	170	245	350	425	600	700	900	1050
	1600	1600	2300	2300	3150	3150	4300	4300	5750	8000	10000
											

Warnings

Products are subject to the relevant security requirements in use as load suspension devices. The mounting instructions and loads must be observed.

M6a: not included in DIN 580

Article no.	d1	h	L	d3	d2	d4	k
9016271	M6	36	13	36	20	20	8
3457970	M6a	27,5	12	27	16	14	6,5
1107089	M8	36	13	36	20	20	8
1107097	M10	45	17	45	25	25	10
1107100	M12	53	20,5	54	30	30	12
1431919	M14	62	27	63	35	35	14
1107119	M16	62	27	63	35	35	14
9016446	M18	71	30	72	40	40	16
1107127	M20	71	30	72	40	40	16
1107135	M22	90	36	90	50	50	20
1107143	M24	90	36	90	50	50	20
1107151	M27	109	45	108	65	60	24
1107178	M30	109	45	108	65	60	24
1107186	M33	128	54	126	75	70	28
1107194	M36	128	54	126	75	70	28
9016447	M39	147	63	144	85	80	32
5402843	M42	147	63	144	85	80	32
9016448	M45	168	68	166	100	90	38
5402844	M48	168	68	166	100	90	38
9016449	M52	187	78	184	110	100	42